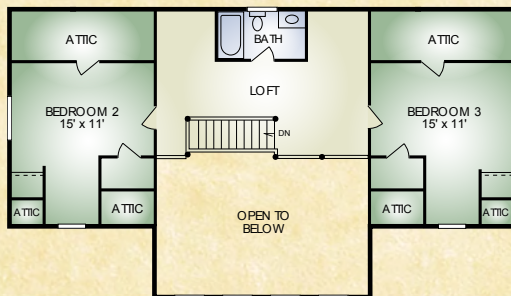
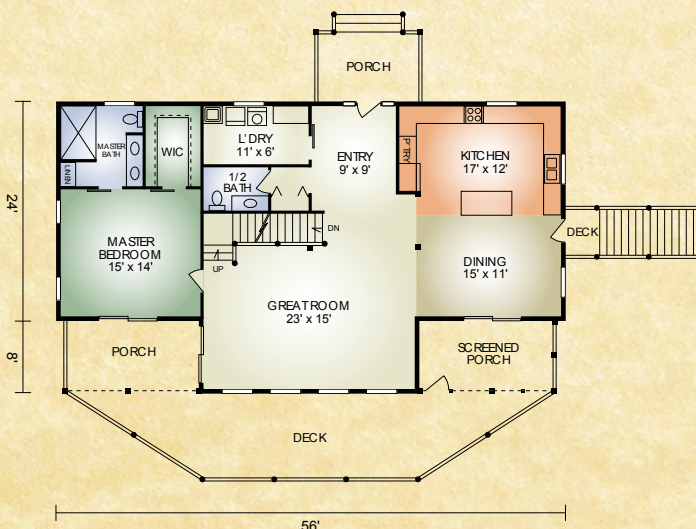


Smoky Mountain

2,223 sq. ft.
3 BR / 2-1/2 BA



SECOND FLOOR



FIRST FLOOR

The Smoky Mountain Floorplan reflects its name, a place to relax and enjoy the mountain views. The great-room features the large gabled windows and exposed timbers in the cathedral ceiling. The kitchen has a serving island and easy access to the screened-in porch and nearby laundry room. Master bedroom has its own bath and walk-in closet. Upstairs are two additional bedrooms, bath and a spacious loft area. You will find all the amenities you need in this 2223 sq. ft. home.

A full set of blueprints of this plan is available. Photo and floor plans may differ slightly from actual blueprints.



HOCHSTETLER
LOG HOMES DONE RIGHT

552 St. Rt. 95, Loudonville, Ohio
Call 800.368.1015