

# MEADOW VIEW

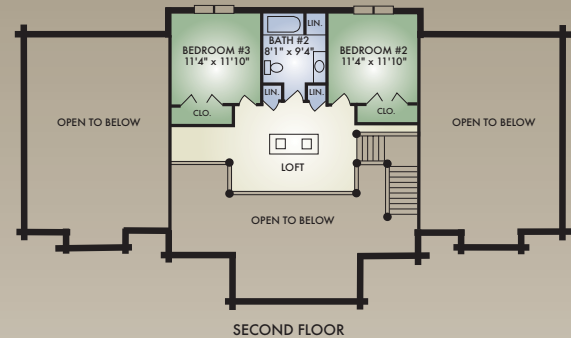
2794 sq. ft.

3 Bedrooms / 2-1/2 Baths

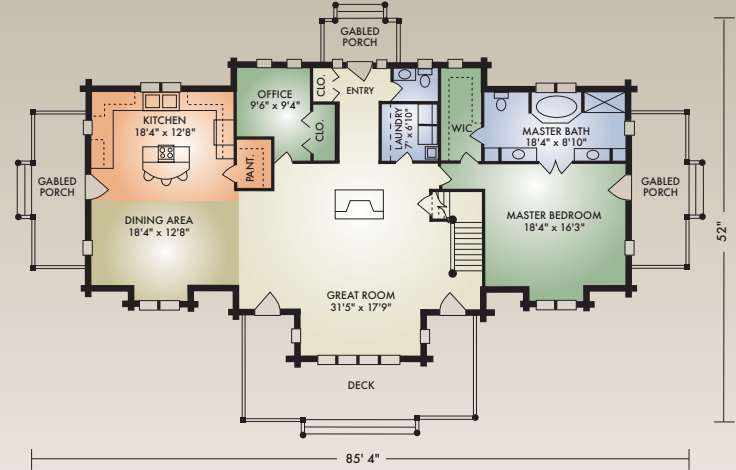


REAR ELEVATION

The Meadow View has a dazzling array of “eye-catching” features... both inside and out, starting with the entry opening to the open-concept great room with centralized fireplace and exposed timbered ceiling, gabled porches on the front and sides, large rear window with expansive deck and decorative gabled extensions. It also has convenient contemporary touches like the first-floor office, laundry room, and pantry. The master bedroom with large master bath and adjoining walk-in closet, and spacious kitchen with an island with raised bar, contribute to its appeal. And, upstairs a large open loft offers a dramatic view of the great room below.



SECOND FLOOR



FIRST FLOOR

A full set of blueprints of this plan is available. Artist's renderings and floor plans may differ slightly from actual blueprints.

Hochstetler Milling, Ltd.  
552 St. Rt. 95, Loudonville, OH 44842  
419-368-0004 or 800-368-1015